

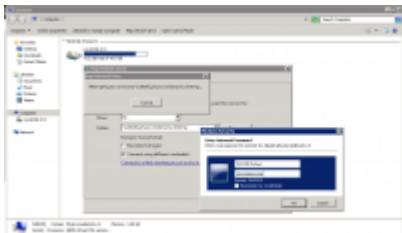
Meetnet Storage Server

Connecting to data03

In order to save your data onto your own PI area one needs to mount the appropriate share. [Here](#) you see the available share names. You only have access to the PI share you have been assigned to by system management. If you need access to other PI share, please contact the PI and system management.

There are two ways to connect to the shares. The simple way is from the meetnet PC or your personal desktop. Alternatively you can connect to these shares using a VPN. Both methods are described below.

Connect from your desktop or Meet PC



To mount the PI share on your desktop, go to the Computer icon on your desktop or select Start -> Computer from the windows bar to open Windows Explorer. Click on the Map network drive to open the network mapping utility. If you do not see the Map network drive option in the top bar, press the Left ALT key to show this bar when it is not visible. Once the Network Mapping utility is opened, select a drive

letter and for the Folder type:

```
\\data03.physics.leidenuniv.nl\pi-xxxx
```

where xxxx is the name of your PI. Select both the Reconnect at login and Connect using different credentials options. Click on Finish to continue the mounting process.

You will be presented an Authentication window on which you have to specify as username: PHYSICS\yourname and of course your own password. Then click OK to finish the mounting process.

Connect from your laptop or from home

Local machines we can trust, but your personal laptop or your machine at home may be connected from Internet and cannot directly mount the share. To make it possible to mount the share you first you need to build a secure connection. This can be done by setting up a VPN connection.

To setup a VPN connection see the [How to setup a VPN](#) pages.

Once the VPN connection is active you can use the above method (Connect from your desktop or Meet PC) to connect to data03.

MacOS

In Finder, open the "Go" menu and select "Connect to server". Enter the address in the form

`smb://data03.physics.leidenuniv.nl/pi-xxx`. Note the forward slashes, contrary to the backslashes used on windows!

After pressing Connect, a window will appear where you can enter your physics username and password.

Linux

From the commandline

Make sure you are running VPN. Make sure you create the `/mnt/YYYY` directory. Then you can run:

```
sudo mount -f cifs -o username=XXXX,domain=PHYSICS  
//data03.physics.leidenuniv.nl/pi-YYYY /mnt/YYYY
```

and you should then see the content of this `pi-YYYY` share in the `/mnt/YYYY` directory.

From desktop filemanager

Most Linux desktop filemanagers can make a connection, similar to the Finder on macOS. In `nautilus` (Gnome/Cinnamon desktop), this is in the Go menu, choose Location (shortcut: control-L). Enter the address in the form `smb://data03.physics.leidenuniv.nl/pi-xxx`. Note the forward slashes, contrary to the backslashes used on windows!

The system will prompt you for the username and password to establish the connection.

From:

<https://helpdesk.strw.leidenuniv.nl/wiki/> - **Computer Documentation Wiki**

Permanent link:

<https://helpdesk.strw.leidenuniv.nl/wiki/doku.php?id=data03:connect>

Last update: **2024/09/20 18:11**

