

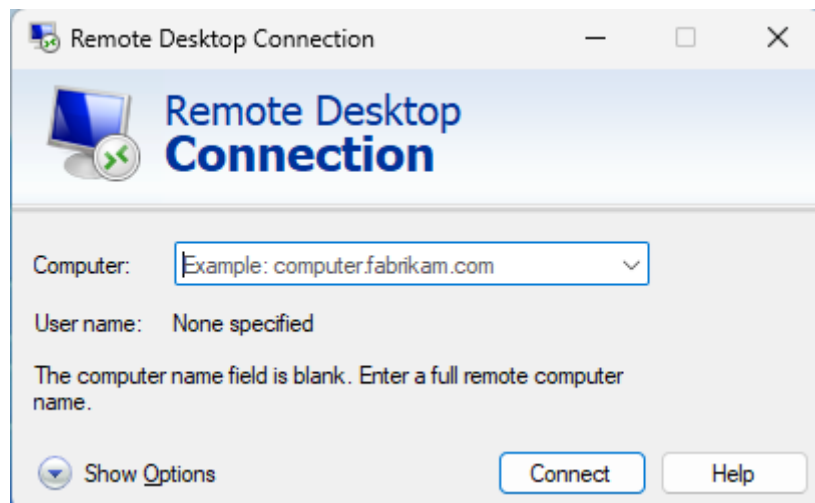
Remote Desktop (RDP) access via gateway in Windows

When you want to use the Remote Desktop protocol (RDP) to access your Windows office computer, please send an email request to the ICT helpdesk (helpdesk@Physics.LeidenUniv.nl) and provide us with the name of the computer you want to access remotely. We must grant you remote access rights on that specific computer before RDP will work.

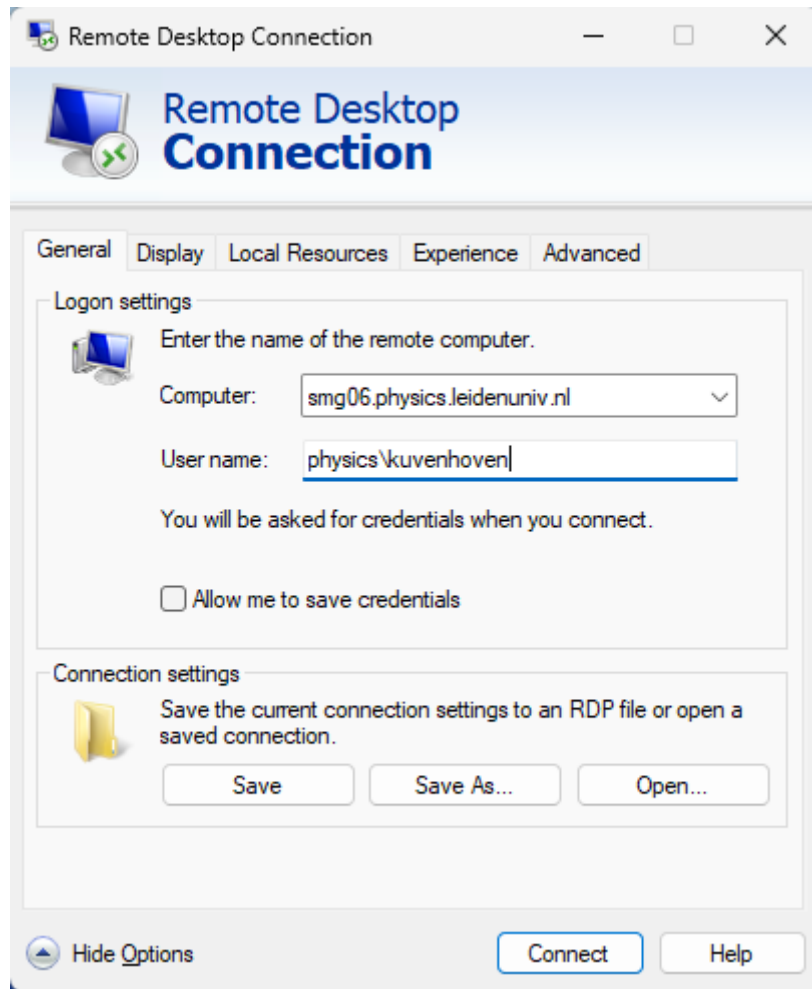
Note: For this to work, you need to have the DUO Mobile app installed on your smart phone and enable the Push option.

To set up RDP from a remote computer running Windows:

[Start the Remote Desktop app on your Windows computer](#)

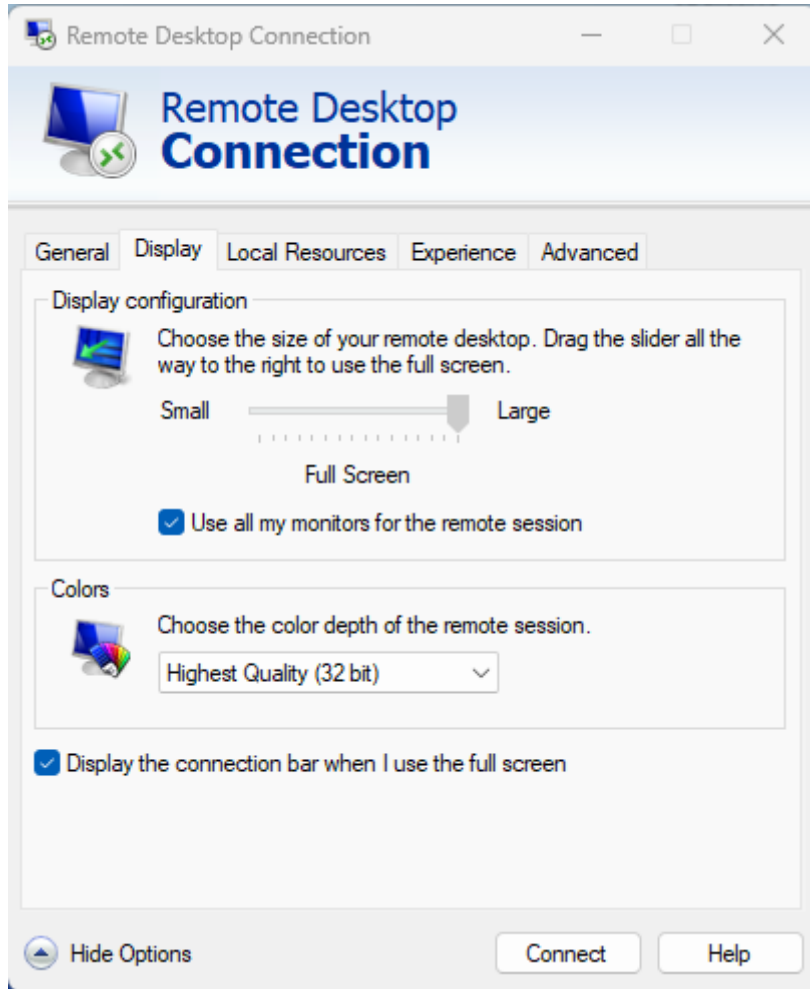


[Click on Show Options](#)

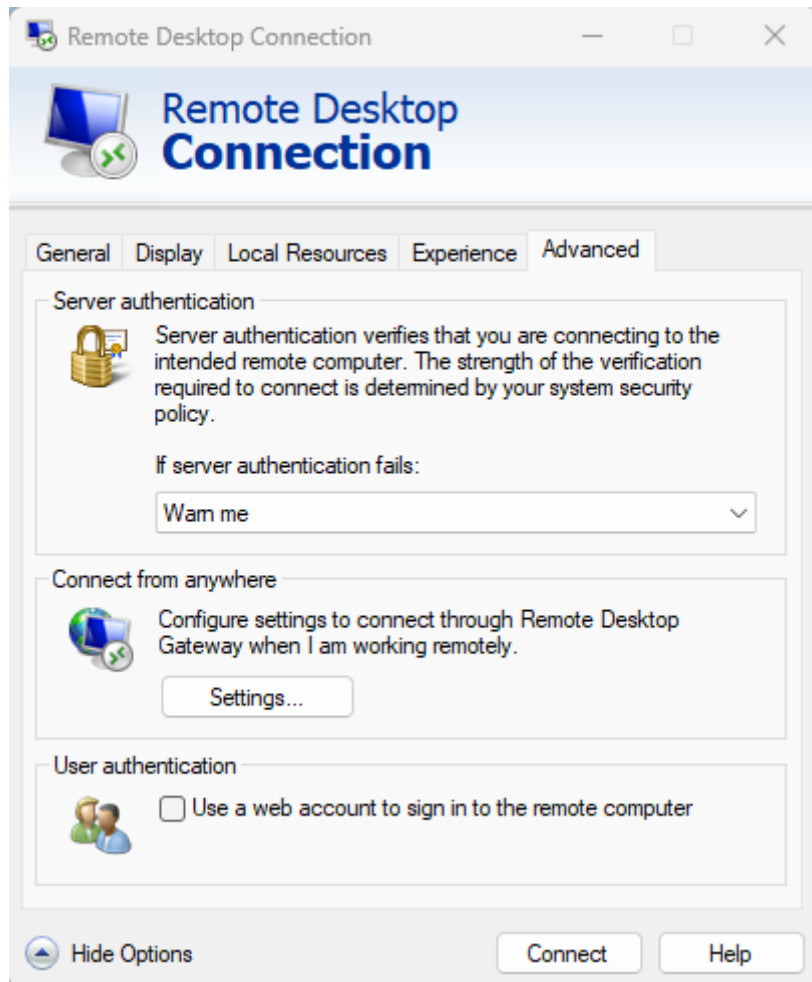


As above, fill in the full computer name you want to access (including .physics.leidenuniv.nl), and your user name preceded by the domain name physics\.

[Click on the Display tab and select Use all my monitors for remote session.](#)



Click on the tab Advanced.

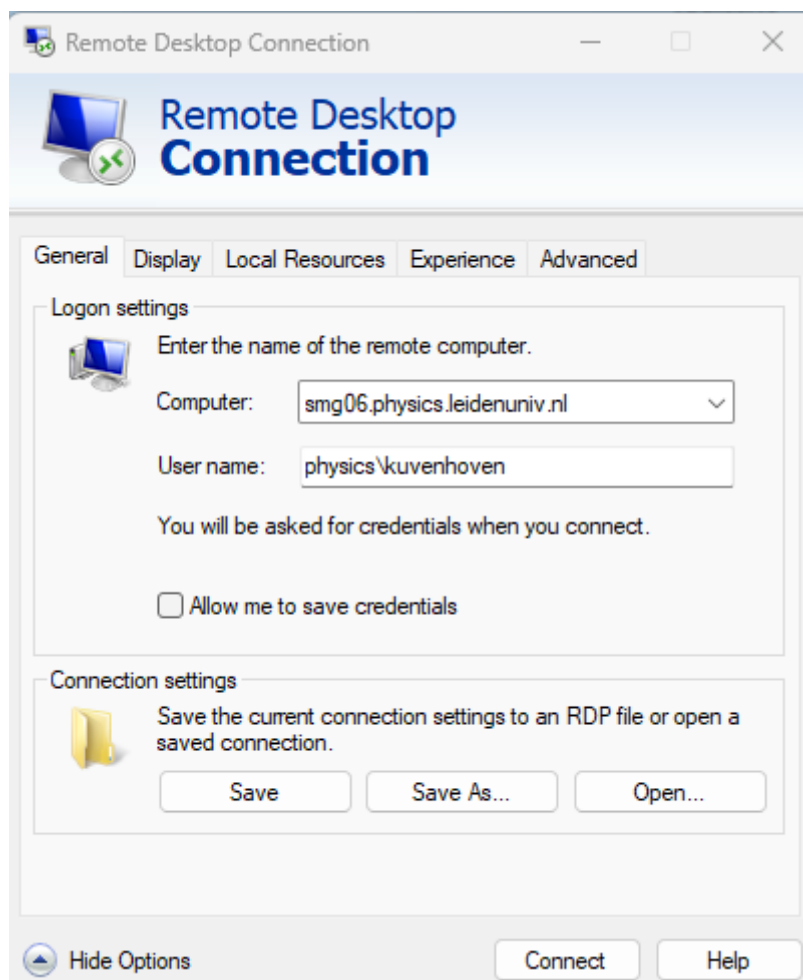


Click on Settings in the box Connect from anywhere.



Fill in everything as above and click on OK.

Click on the tab General.

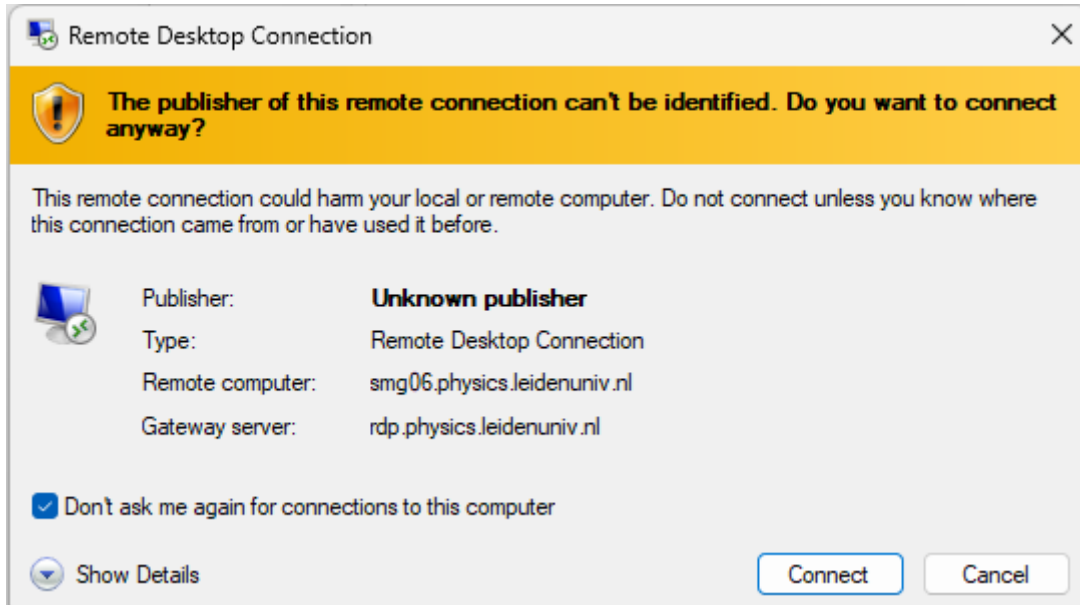


Click on Save As... in the Connection settings box.

Enter a sensible name (like your computer name) and save this configuration file to your Desktop.

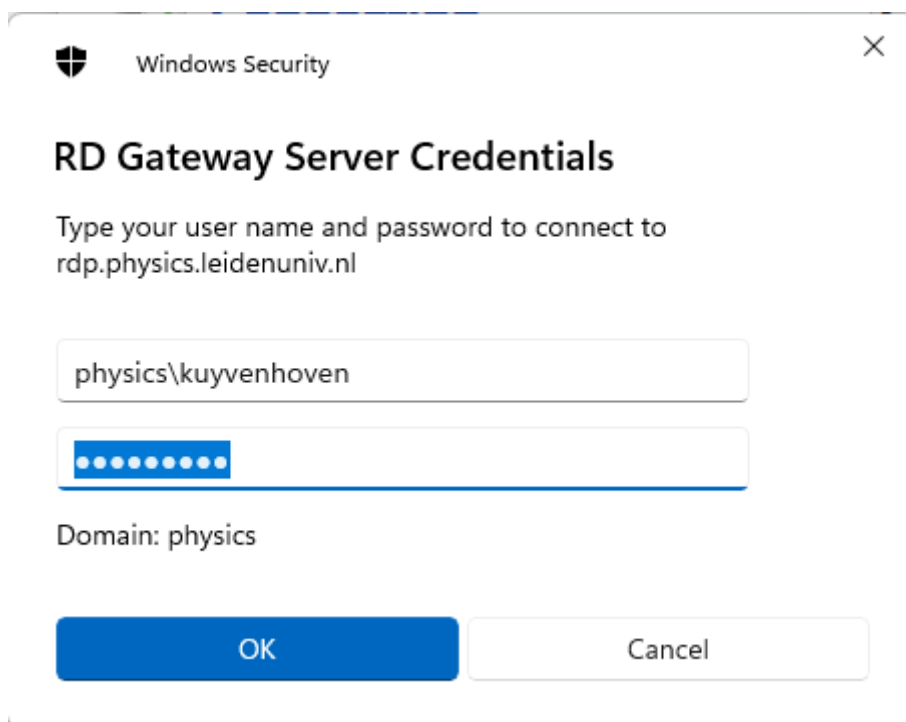


To start the Remote Desktop session, double click the icon on your desktop and click on Connect.



Check the box Don't ask me again for connections to this computer, and click on Connect.

The next window only appears when connecting from outside the physics network (e.g. when connecting from home):



Fill in your physics\username and password.

Click on OK and you will receive a push message in the DUO Mobile app on your phone. If it does not pop up automatically, please open the DUO Mobile app manually.

Click the green Accept button in your DUO Mobile app.

On your computer, a login window briefly appears, followed by the DUO window. In this window, click on Send Push.

You will get another Duo push message on your phone. Clicking on Accept again should start your Remote Desktop session.

From:

<https://helpdesk.strw.leidenuniv.nl/wiki/> - **Computer Documentation Wiki**

Permanent link:

https://helpdesk.strw.leidenuniv.nl/wiki/doku.php?id=general:windows_desktop_gateway

Last update: **2025/02/04 11:16**

