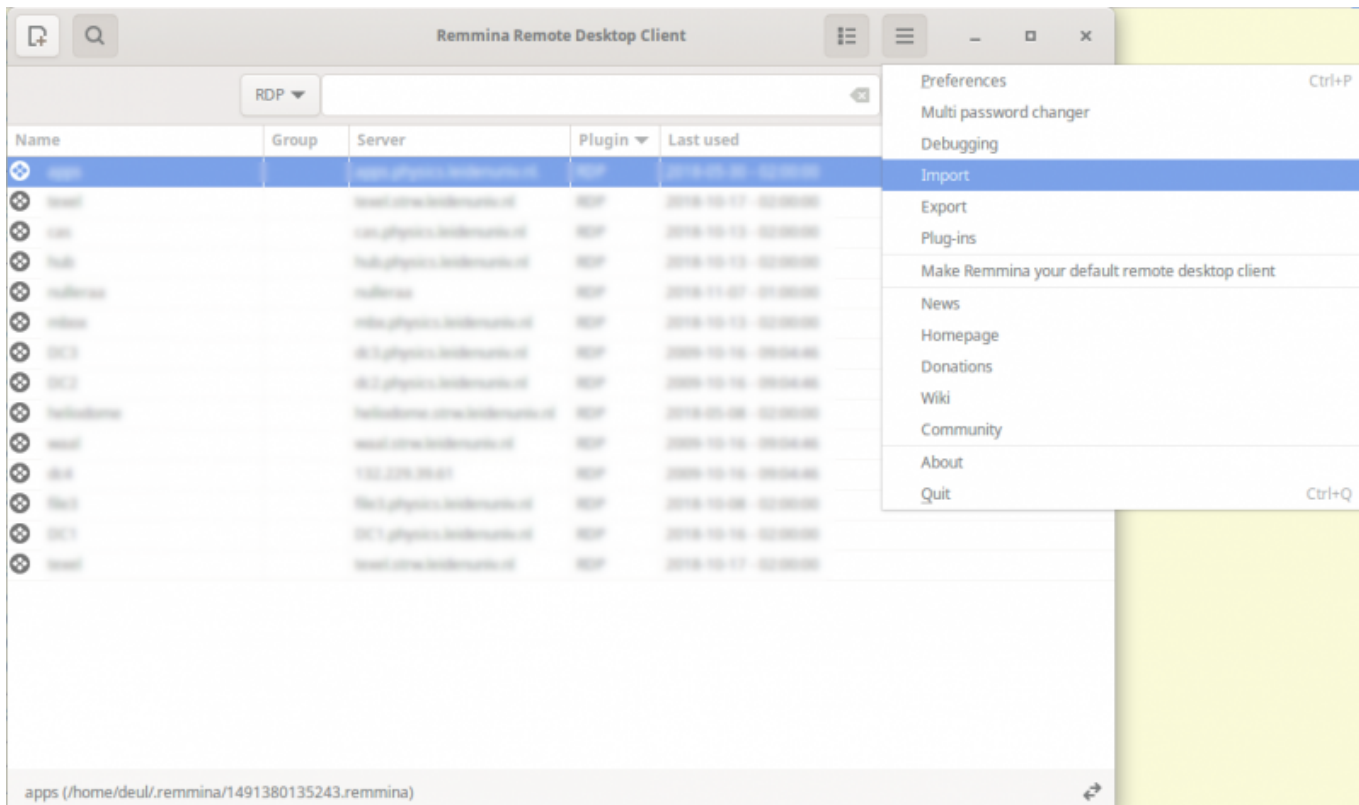


RDS from Linux

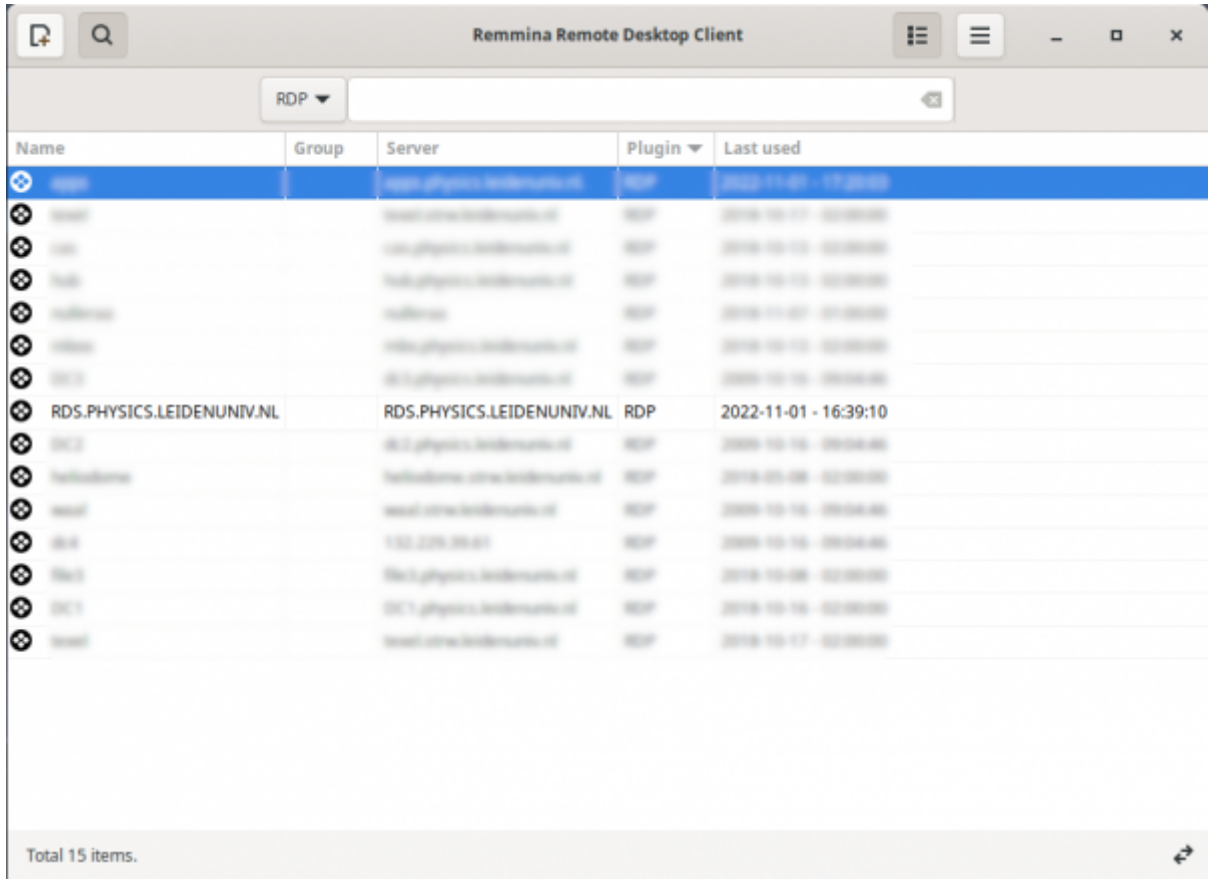
For Linux we use the package remmina to setup the remote desktop connection. So open your remmina program by typing on a terminal command line:

```
remmina
```

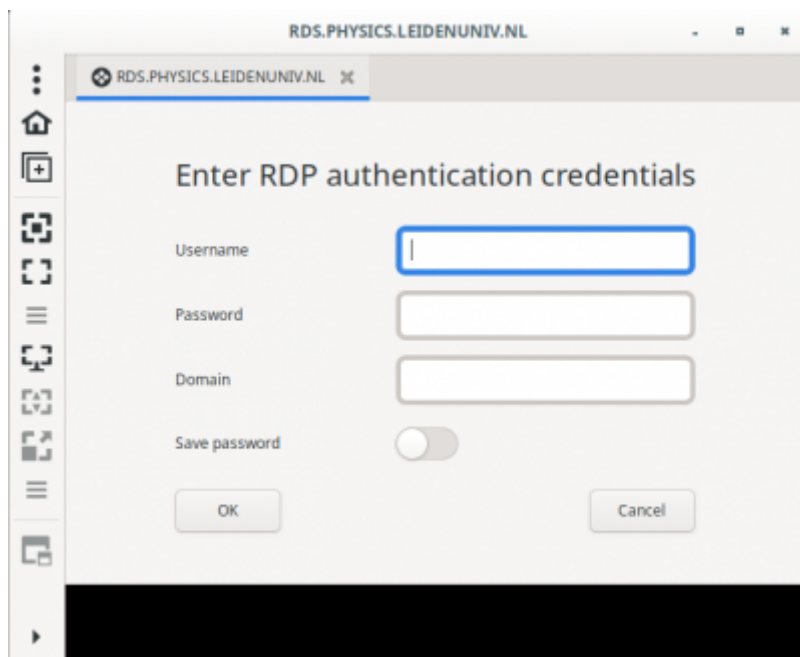
Now your 'remmina' window is open and select from the Hamburger icon on the right the Import option:



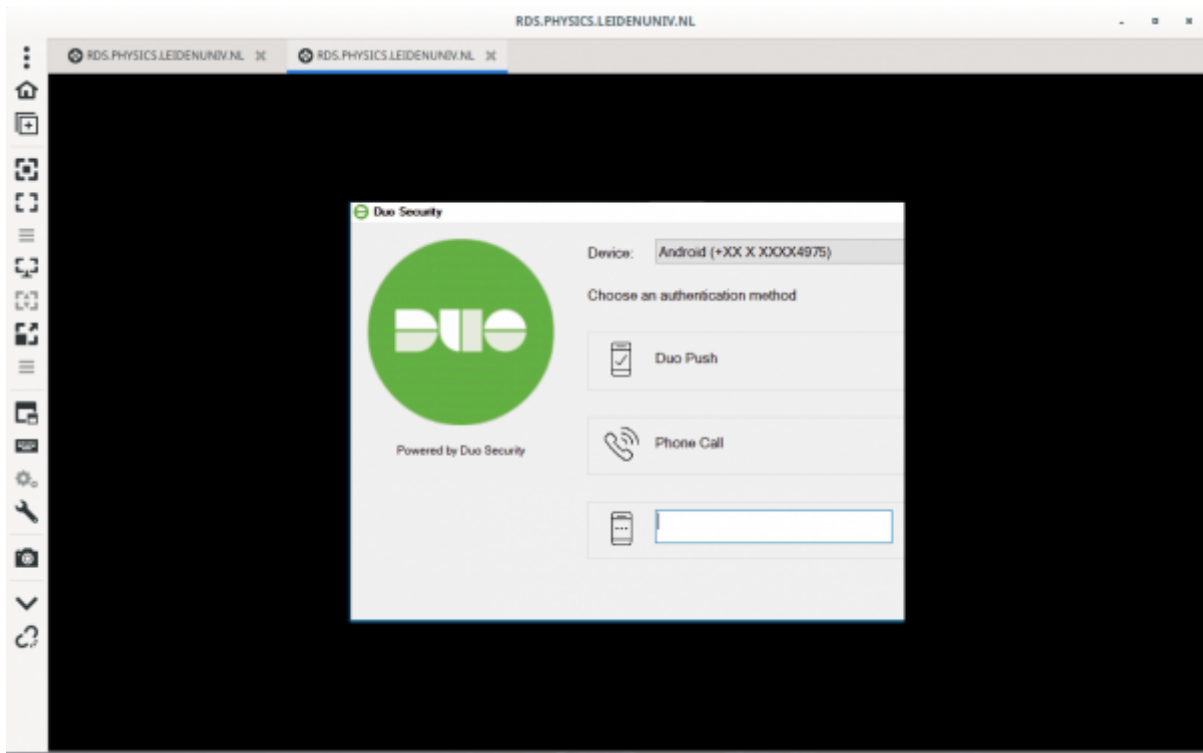
With the file browser select the just downloaded .rdp file. After the file is imported you will see an extra entry:



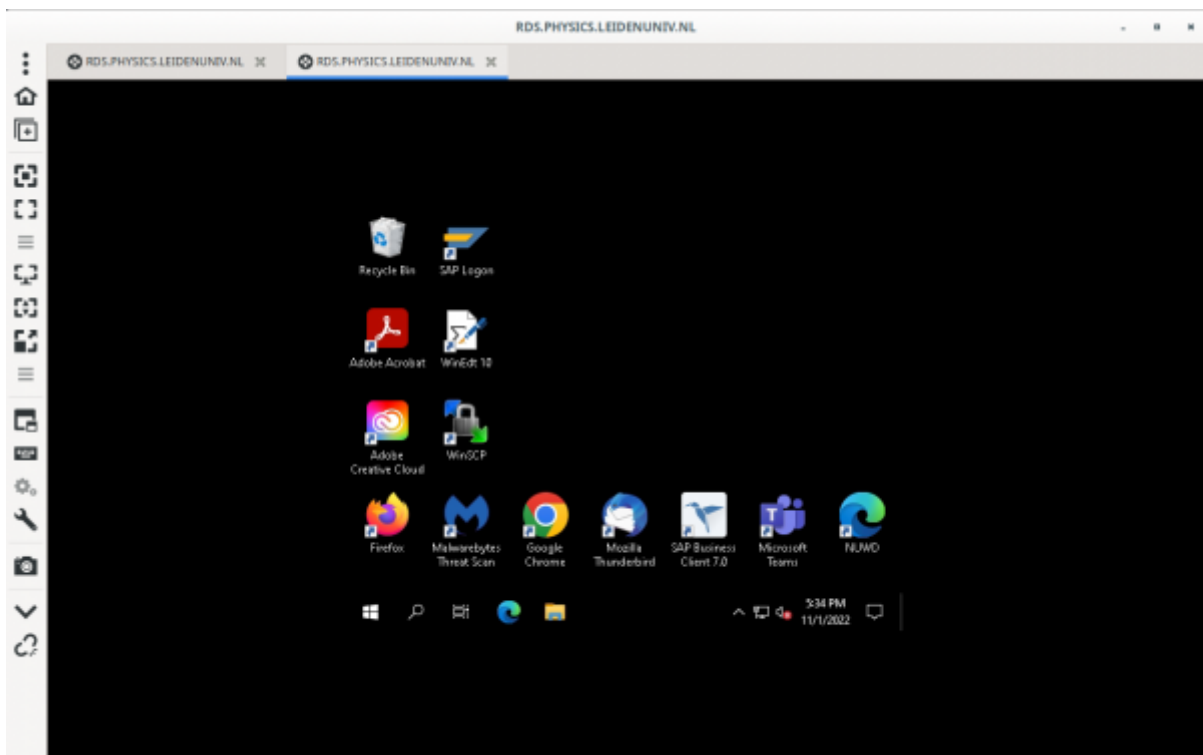
Now double click that new entry and you will be presented a login window:



Enter your PHYSICS or STERREWACHT credentials and click on OK. And now you are logging in onto a server in the farm, but not after you confirmed your 2FA.



The problem with the vanilla configuration is that it does not do a good job on the scaling. It starts out with displaying a very small desktop:



To correct that you have to edit the configuration of the RDS entry in the main window of remmina and specify a specific Custom size. In addition you can also 'Enable multi monitor':

New connection profile

Name: RDS.PHYSICS.LEIDENUNIV.NL

Group: [empty]

Protocol: RDP - Remote Desktop Protocol

Password hash: [empty]

Left-handed mouse support Disable smooth scrolling

Enable multi monitor Span screen over multiple monitors

List monitor IDs: [empty]

Resolution: Use initial window size Use client resolution

Custom: 1280x960

Colour depth: True colour (32 bpp)

New connection profile: <Auto detect>

Keyboard mapping: [empty]

Buttons: Cancel, Save as Default, Save, Connect, Save and Connect

From: <https://helpdesk.strw.leidenuniv.nl/wiki/> - **Computer Documentation Wiki**

Permanent link: <https://helpdesk.strw.leidenuniv.nl/wiki/doku.php?id=manuals:rds:linux>

Last update: **2022/11/03 20:33**

