

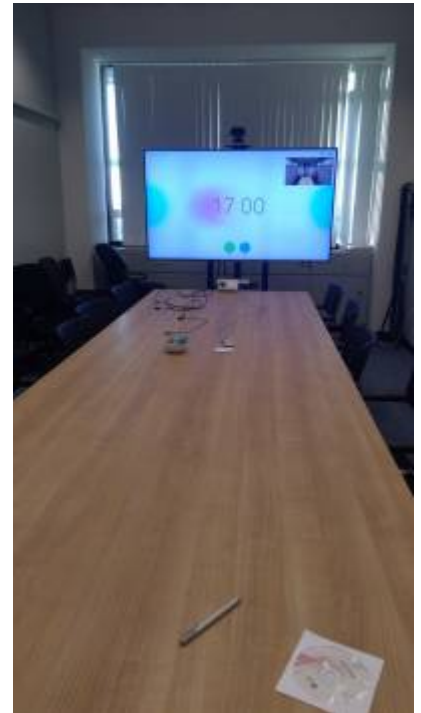
# Cisco SX20, HL 1104

This is the newest Video conferencing unit we have in house. It is an endpoint Video Conferencing unit so you can either setup a point-to-point connection from this unit to another Video Conferencing unit, become the receiving other edge point in a point-to-point connection, or you can call into a Video Conferencing meeting and participate as one of the endpoints in that meeting.

## Specifics

IP: 132.229.214.149

Protocol: H323/SIP



## How to operate



The Cisco SX20 system consists out of a controller box, a movable camera and a table microphone pad. It is connected to the LG screen through its HDMI connector (The LG can also be used as a presentation screen without using the Video Conferencing unit, by selecting the PC input).

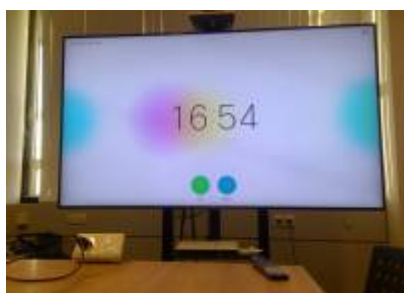
## Start



Before one can start with any displaying, the LG screen needs to be switched on. This can be done by pressing the top row 'On' button on the desktop switch board. You will see that the 'On' button is blinking for a while, until the display is fully switched on.

Depending on a previous usage, one either sees on the display that the PC is not connected or one sees the startup screen from the Video Conferencing unit. In case the display says 'PC not connected' the desktop switch box has the PC button (on the third row) is highlighted. We want to use the Video Conferencing unit, so press the 'Video Conf' button to connect the Video Conferencing unit to the display.

### Welcome



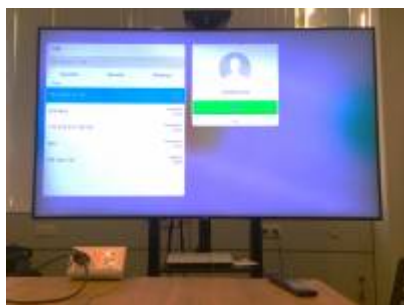
After a little while you are presented the 'Welcome' screen from the Video Conferencing unit. On this Welcome screen you see a green button that denote 'Call'.



With the top part of the remote control one can step to other clickable elements in the display. Walk down to the green button to open the Call Assist window. One can select (press) a button by hitting the central Enter button in the middle of the arrow keys on the remote control.

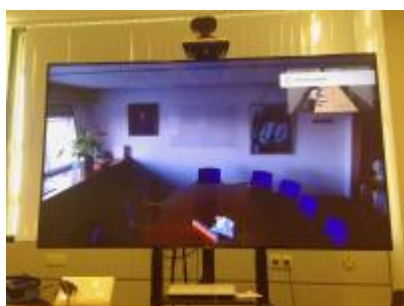
To move back to the Welcome screen, use the Back arrow, just left below the arrow circle and Enter button.

### Call



Once you entered the Call assistance window you see a list of previous incoming and outgoing calls. You can step through the list with the up/down arrow keys and once you are on the desired call number hit the right button which will bring you to the Call Initialization button. Pressing the central 'Enter' button will start the actual call.

If your counter part is not in the call list, go to the top entry box and start typing an IP number. Use the numeric keypad on the remote to type the numbers, hit the arrow down key to open a small screen keyboard and walk through that keyboard to select the . character. Hitting the 'Enter' key will put the . character in the entry box. Continue typing numbers and selecting the . character until you have entered the full IP address. Then hit the right array and start your call.



Once the call is picked up at the other end, you can start your meeting.



By pressing the Enter key you can invoke the Video Conferencing unit to display additional configuration options for this meeting.

At the bottom you see options to Add others to your call (this is not possible with our current setup). You also see a button denoting 'Share'. Selecting it and hitting Enter will allow you to enable display of a connected laptop inside the meeting environment. Your laptop must be connected to one of the cable (VGA or HDMI) coming from the desktop switch box.

There is a button the 'Hold', which disables the display and sound from your site to the remote site. In case you should have a little private discussing during a meeting.

The right most (red) button is the one with which you can end the meeting.

On top of the display you see on the left the IP number of this unit. Once selected you can set some addition parameters of the device. In general it is not necessary to touch those parameters. On the right hand site one sees a Camera and Person icon. The Camera icon is the most important one because you can then modify the camera setting and display layout.

### Camera Control



Select the Camera icon and you are presented the Camera/Display manipulation utility. Hitting the Enter key opens a control window from which you can direct the camera to left, right, up and down and which allows you to zoom in or out. This way you have full control over the camera direction and view.

On top of the Camera control window you see a 'Pin' icon. Selecting that icon and hitting the Enter button make the 'self view' from the Camera Control Window stick, thus changing the display from a full 'other end' display to a 'full other end with self view inset' display. You even have control over where the self view is placed in the display.

Once you have ended your meeting, please use the desktop control box to switch 'Off' the display. The Video Conferencing unit will go into hibernation mode automatically.

### Cisco SX20 User Guide

From:

<https://helpdesk.strw.leidenuniv.nl/wiki/> - **Computer Documentation Wiki**

Permanent link:

<https://helpdesk.strw.leidenuniv.nl/wiki/doku.php?id=videoconf:cisco>

Last update: **2018/09/18 05:37**

